

ISLEWORTH & SYON SCHOOL

Key Stage 4 Courses Evening
Thursday 13 March 2025



OUR VISION IS TO BE
'OUTSTANDING IN EVERY RESPECT'
THROUGH THE CONSTANT DRIVE
FOR EXCELLENCE ACROSS
THE SCHOOL.

'TOGETHER WE LEARN,
ACHIEVE AND SUCCEED'.

Outline of the Evening

- The context
- The core curriculum
- The courses and options
- Opportunity to meet staff and ask questions
- Next steps

School Aims

We aim to ensure that our students are:

- **Successful learners** that are cared for in a happy, safe, challenging and rich learning environment;
- Autonomous and resilient learners who **strive for excellence** and fulfil their potential both educationally and personally;
- Offered a rich range of **academic, creative and sporting opportunities**, within an environment that recognises our long history and established traditions;
- **Responsible citizens**, with the skills, knowledge and understanding to contribute to society and to their community;
- **Well-mannered, considerate, ambitious and confident** young men ready to **enjoy success** in the world of work and leisure.

GCSE Results - 2024

CORE SUBJECTS	I&S 2024	BOYS' NATIONAL
ENGLISH - GRADE 9-7	21%	12%
MATHS - GRADE 9-7	24%	18%
SCIENCE - GRADE 9-7	30%	8%
ENGLISH - GRADES 4+	68%	58%
MATHS - GRADES 4+	73%	62%
SCIENCE - GRADES 4+	65%	56%

Key Stage 4 Curriculum

The National Context

- Linear courses - less modules and coursework (now referred to as Non-examined Assessments (NEAs))
- Preparing for students to progress through education, employment or training
- Academic success important but also students' soft skills and experiences
- Focus on a core of eight examined subjects
- EBacc (English Baccalaureate) - no certificate or requirement
 - English, mathematics, science, language and history or geography
- Vocational qualifications still very applicable and relevant



GCSE Grades

Grading Structure

NEW GCSE GRADING STRUCTURE	CURRENT GCSE GRADING STRUCTURE
9	
8	A*
7	A
6	B
5	
4	C
3	D
2	E
1	F
	G
U	U

GOOD PASS (DfE)
5 and above = top of C and above

AWARDING
4 and above = bottom of C and above

The Best Outcomes for Every Student

We aim to maximise each individual student's academic achievements.

Key measures of success - **BEST 8 GRADES**

ATTAINMENT

- The best 8 grades with a focus on English and Maths

PROGRESS

- Ensuring progress from Year 7

Critical that parents/carers, staff and students all play their part in this.

Key Stage 4 Options

Core Subjects

- All students will participate in a core curriculum
- The core curriculum at Key Stage 4 is made up of:
 - English
 - Mathematics
 - Science
 - Core Physical Education (not assessed)
 - PSHE (not assessed)

English Language & Literature

- All students will take two English GCSEs:
 - GCSE English Language
 - GCSE English Literature
- Assessment consists of four examinations in total for these two subjects



The Importance of Reading

- A quarter of students at 15 still have a reading age of 12 or below.
- There is a significant correlation between student reading ability and performance across all subjects at GCSE. This is equally important in maths and sciences as it is in other subjects.
- The gender gap in reading ability widens at secondary school, with girls outperforming boys.

You should ensure that your son/ward:

- has a reading book in his school bag every day;
- reads for a minimum of 20-30 minutes every day;
- chooses an age-appropriate reading book;
- reads a range of fiction and non-fiction; and
- discusses what he is reading with you.



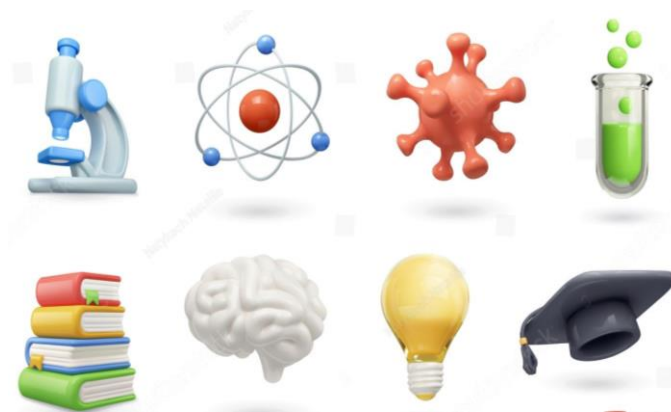
Mathematics

- Students have started the GCSE course in Year 9
- Students will sit:
 - GCSE statistics in Year 10
 - GCSE mathematics in Year 11
- GCSE mathematics consists of three examinations, two requiring a calculator
- GCSE statistics consists of two examinations, both requiring a calculator
- It is therefore essential that students come to school with **a calculator every day**

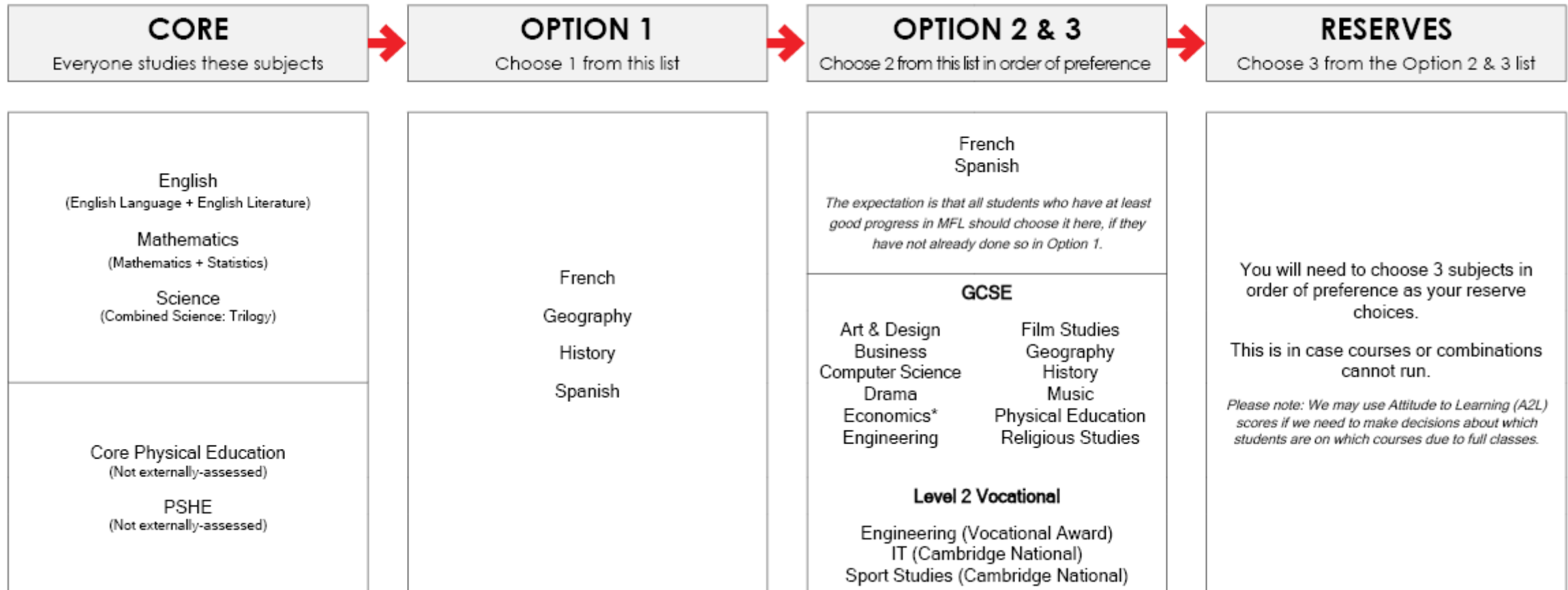


Science

- Students will start the GCSE course at the end of Year 9
- All students will study at least two GCSEs in science
- Science examinations take place at the end of Year 11
- Top set students will have the option to move to triple science after the Year 11 mock examinations



Key Stage 4 Options



Disallowed Combinations

- There are a number of subject combinations which students cannot pick.
- These are subjects which are similar in content.
- Examples are:
 - Sport vocational and Physical Education GCSE
 - Business GCSE and Economics GCSE
 - Engineering vocational and Engineering GCSE

Limitations

- Only one subject has an entry requirement.
 - Economics - Projected mathematics level 6c+
- Subjects can only run if there are sufficient student numbers
- It is possible some subject combinations will not work


Key Stage 4 Next Steps

“Key Stage 4-Ready”

- Year 9 examinations in May/June 2025
- Encourage your son/ward to use the textbooks, revision guides and available online resources to go over work studied each week.
- Ask your son/ward to explain to you what he has learned each week.
- Help your son/ward to draw up a revision plan to structure his revision and homework (blank timetables available at www.isleworthsyon.org/study-and-revision-skills).
- Reinforce that the core curriculum subjects are essential for future success and help to support other Key Stage 4 courses.

Digital Options Booklet

www.isleworthsyon.org



Home About Us Academic Admissions Enrichment Pastoral Care School Life Sixth Form

LEARN
about 2022-23 in our 81-page Review

CATCH UP
with our weekly online newsletter

DISCOVER
about our successful Sixth Form

THE SIXTH FORM APPLICATION DEADLINE HAS PASSED.
YOU CAN STILL APPLY, BUT WE CAN'T GUARANTEE PLACES ON SOME OVERSUBSCRIBED COURSES.
CLICK THIS BANNER TO LEARN MORE AND APPLY.

EXCEPTIONAL EDUCATIONAL OUTCOMES OUTSTANDING OPPORTUNITIES ASPIRATIONAL NEXT STEPS EXTENSIVE LEADERSHIP EXPERIENCES

Our School Our Values Sixth Form

Welcome to Isleworth & Syon School
Welcome to Isleworth &...

Latest News

THE ISLEWORTHIAN NEWSLETTER

Each week during term-time, the school publishes 'The Isleworthian'. This is an online newsletter with all the latest news, notices and information from across the school.

Key Stage 4 Options
KEY STAGE 4 COURSES 2024-2026

Click the cover


Digital Options Booklet

www.isleworthsyon.org/options

Home » Academic » Key Stage 4 Options

Key Stage 4 Options

[EDIT PAGE](#)



In This Section

- [Careers](#)
- [Curriculum & Learning - Introduction](#)
- [Examinations](#)
- [Key Stage 4 Options](#)**
- [Learning Support](#)
- [Library](#)
- [Remote Learning](#)
- [Study & Revision Skills](#)
- [Subjects](#)
- [Year 8 Mini-Options](#)

Introduction

Thank you for your interest in the Key Stage 4 Options process. All students in Year 9 undertake this process during the Spring and Summer Terms, to select the subjects that they will study at Key Stage 4 (Years 10 and 11).

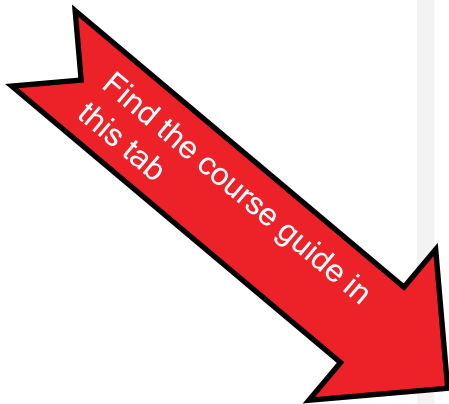
The Key Stage 4 Courses Evening takes place on **Thursday 14 March 2024**.

Please read all of the sections below completely and thoroughly.

Before Your Application +

Completing Your Application +

After Your Application +



Digital Options Booklet



ISLEWORTH &
SYON SCHOOL
FINIS CORONAT OPUS

KEY STAGE 4 COURSES 2025-2027





  /IsleworthSyon
 isleworthsyon.org

Digital Options Booklet

Options & Guidance

All students will follow GCSE courses in the core subjects of English, mathematics and science. Core physical education and PSHE also form part of the timetable but are not externally-assessed. Students have the opportunity to select three options for their Key Stage 4 curriculum - see below. For a few students, an alternative curriculum will be discussed, where appropriate.

CORE Everyone studies these subjects	OPTION 1 Choose 1 from this list	OPTION 2 & 3 Choose 2 from this list in order of preference	RESERVES Choose 3 from the Option 2 & 3 list												
<p>English <small>(English Language + English Literature)</small></p> <p>Mathematics <small>(Mathematics + Statistics)</small></p> <p>Science <small>(Combined Science: Trilogy)</small></p> <hr/> <p>Core Physical Education <small>(Not externally-assessed)</small></p> <p>PSHE <small>(Not externally-assessed)</small></p>	<p>French</p> <p>Geography</p> <p>History</p> <p>Spanish</p>	<p>French Spanish</p> <p><small>The expectation is that all students who have at least good progress in MFL should choose it here, if they have not already done so in Option 1.</small></p> <hr/> <p>GCSE</p> <table style="width: 100%; border: none;"> <tr> <td style="width: 50%;">Art & Design</td> <td style="width: 50%;">Film Studies</td> </tr> <tr> <td>Business</td> <td>Geography</td> </tr> <tr> <td>Computer Science</td> <td>History</td> </tr> <tr> <td>Drama</td> <td>Music</td> </tr> <tr> <td>Economics*</td> <td>Physical Education</td> </tr> <tr> <td>Engineering</td> <td>Religious Studies</td> </tr> </table> <hr/> <p>Level 2 Vocational</p> <p>Engineering (Vocational Award)</p> <p>IT (Cambridge National)</p> <p>Sport Studies (Cambridge National)</p>	Art & Design	Film Studies	Business	Geography	Computer Science	History	Drama	Music	Economics*	Physical Education	Engineering	Religious Studies	<p>You will need to choose 3 subjects in order of preference as your reserve choices.</p> <p>This is in case courses or combinations cannot run.</p> <p><small>Please note: We may use Attitude to Learning (AZL) scores if we need to make decisions about which students are on which courses due to full classes.</small></p>
Art & Design	Film Studies														
Business	Geography														
Computer Science	History														
Drama	Music														
Economics*	Physical Education														
Engineering	Religious Studies														

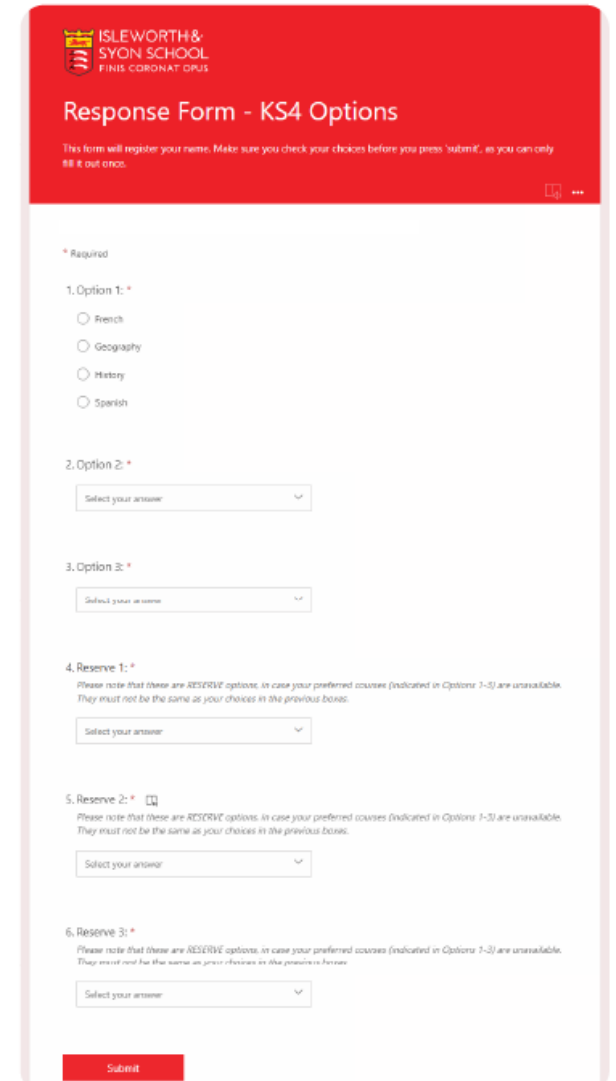
* For economics, students must achieve a minimum of a projected 6c in maths to gain acceptance on to the course

When submitting the online application form, students make **three** options choices. They are also required to select **three** reserve choices. These **must** be different from the previous option choices. Students should not choose similar courses for their options as this will not be considered a broad and balanced choice. Examples of options not permitted to be chosen together are: vocational sport and GCSE physical education; or GCSE business and GCSE economics. All options are preferences and cannot be guaranteed.

There will need to be sufficient interest in each course for it to run, and a few combinations may not be viable.


Response Form

- Emailed to students – **Monday 17 March**
- Deadline for returns – **Monday 24 March**



The screenshot shows a web form titled "Response Form - KS4 Options" with the school's logo at the top. Below the title, a note states: "This form will register your name. Make sure you check your choices before you press 'submit', as you can only edit it out once." The form contains six sections, each with a "Required" label and a "Select your answer" dropdown menu:

- 1. Option 1: ***
 - French
 - Geography
 - History
 - Spanish
- 2. Option 2: ***
- 3. Option 3: ***
- 4. Reserve 1: ***

Please note that these are RESERVE options, in case your preferred courses (indicated in Options 1-3) are unavailable. They must not be the same as your choices in the previous boxes.
- 5. Reserve 2: *** 

Please note that these are RESERVE options, in case your preferred courses (indicated in Options 1-3) are unavailable. They must not be the same as your choices in the previous boxes.
- 6. Reserve 3: ***

Please note that these are RESERVE options, in case your preferred courses (indicated in Options 1-3) are unavailable. They must not be the same as your choices in the previous boxes.

A red "Submit" button is located at the bottom right of the form.

Next Steps

- Options drop-in session for parents/carers (contact school to arrange):

Tuesday 18 March (9:00 - 9:30)

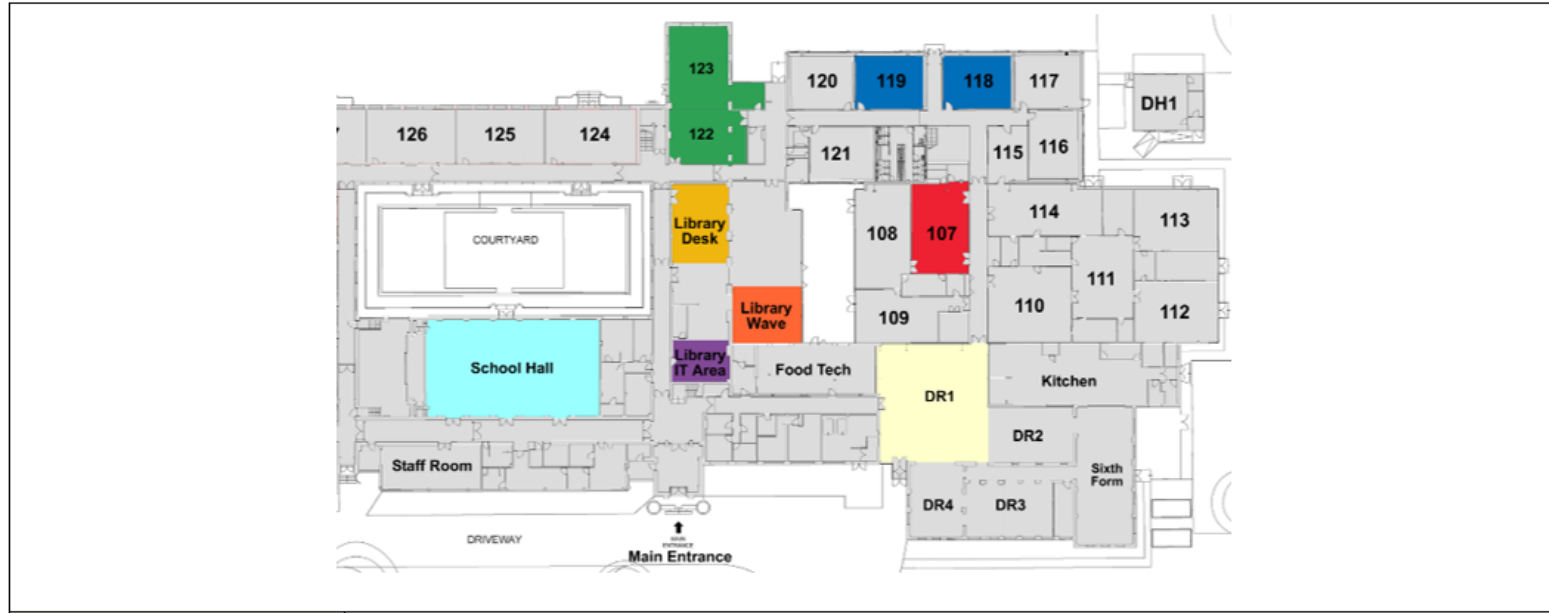
Thursday 20 March (9:00 - 9:30)

- Phone or email school@isleworthsyon.org

Next Steps

- Students emailed the KS4 online options form - **Monday 17 March**
- **DEADLINE:**
All returns to be completed by - **Monday 24 March**

Location of Courses



DINING ROOMS (DR1)	SIGN IN
SCHOOL HALL	SLT Presentation
LIBRARY DESK	French / Spanish
LIBRARY WAVE	Computing
LIBRARY IT AREA	Business Studies / Economics
HUMANITIES: 118	Geography/ History / RE
HUMANITIES: 119	BTEC PE / GCSE PE
DRAMA (122/123)	Drama - Music - Film - Engineering / Electronics
ART (107)	Art

