

KEY STAGE 4 COURSES 2025-2027



Contents

You can click on a heading below to jump straight to that subject, or you can use the arrows at the bottom of the page to navigate.

Welcome.....	1
Options & Guidance	2
Key Stage 4-Ready - Curriculum.....	3
Key Stage 4-Ready - Prepare for the Future.....	4
English & Film.....	5
Mathematics	6
Science.....	7
Humanities	8
Modern Foreign Languages	9
Art.....	10
Business & Economics	11
Computing & ICT	12
Design & Technology	13
Performing Arts.....	14
Physical Education	15
What Next?.....	16



Welcome

Throughout the last three years of your child's schooling, all of the students at school have followed a broadly similar curriculum. In Years 10 and 11, there is some choice over the subjects that the boys can follow. We review the Key Stage 4 offer on an annual basis, and endeavour to ensure that it best meets the needs of each cohort of students, whilst also considering the expectations of universities, colleges and employers. We also ensure that we broadly meet the expectations of the Department for Education. The provision therefore can change each year, to ensure that the very best range of courses is provided for your son/ward.

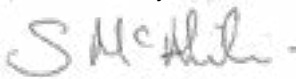
Our aim is to maximise the achievements of each individual student in the various GCSE courses or vocational qualifications. To ensure that all students attain to their potential and make the very best progress, we aim to provide a broad and balanced curriculum. You will be very aware of the national focus on securing at least eight good GCSEs (or equivalents) with levels at 9 to 5 ('strong' pass) or 9 to 4 ('standard' pass), as well as passes in English language and mathematics. This national benchmark is important for your son/ward, and our expectation is that all students and their families will support us in making this the priority over the next two years.

We do focus on examination outcomes, but we are also aware that for future success all students need to develop their 'soft skills', independence and resilience. The pastoral team and the teaching staff spend considerable time thinking about each individual student as we plan for their progression. It is very important to note that we will guide your son/ward towards the most appropriate course for him, so that he achieves his very best.

We hope that you will find this booklet informative. Please do read it carefully and set aside some time to discuss the contents with your son/ward.

Thank you for your continued support.

Yours faithfully,



Mr S McAlinden
Assistant Headteacher - Y8/9



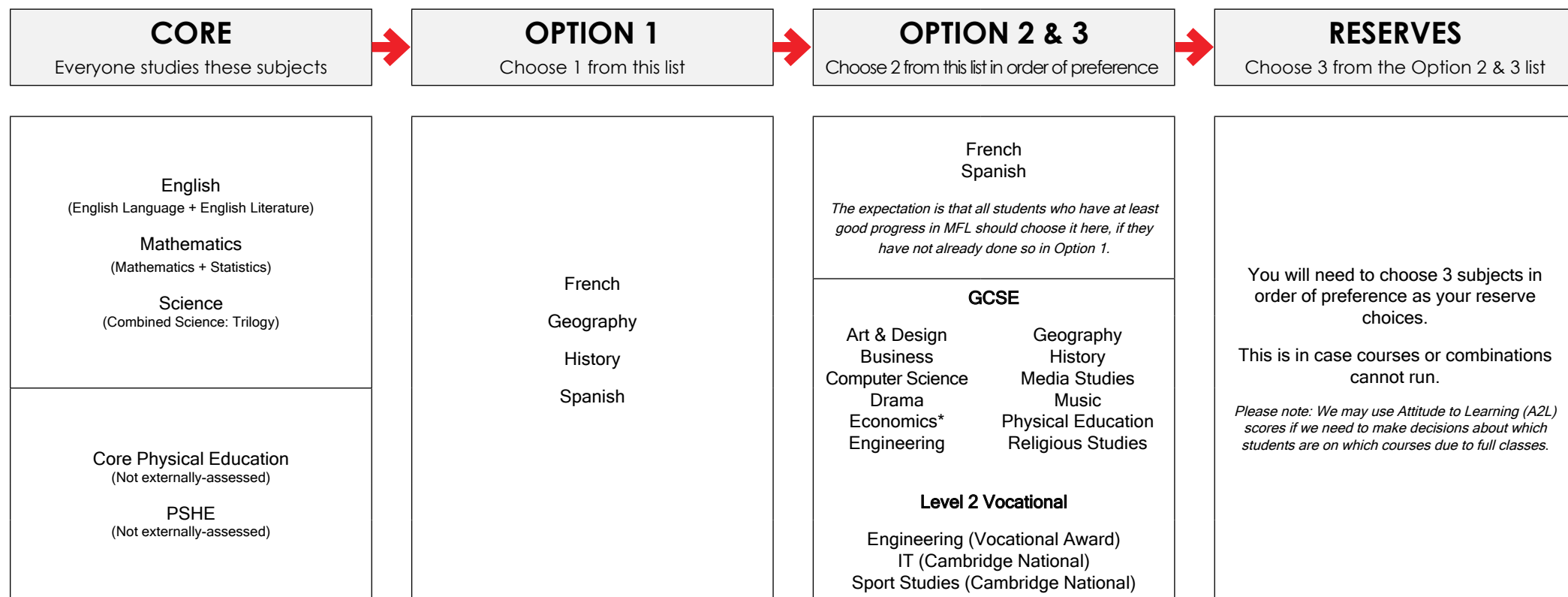
Simon Fisher
Co-Headteacher



Jo Higginbottom
Co-Headteacher

Options & Guidance

All students will follow GCSE courses in the core subjects of English, mathematics and science. Core physical education and PSHE also form part of the timetable but are not externally-assessed. Students have the opportunity to select three options for their Key Stage 4 curriculum - see below. For a few students, an alternative curriculum will be discussed, where appropriate.



** For economics, students must achieve a minimum of a projected 6c in maths to gain acceptance on to the course*

When submitting the online application form, students make **three** options choices. They are also required to select **three** reserve choices. These **must** be different from the previous option choices. Students should not choose similar courses for their options as this will not be considered a broad and balanced choice. Examples of options not permitted to be chosen together are: vocational sport and GCSE physical education; or GCSE business and GCSE economics. All options are preferences and cannot be guaranteed.

There will need to be sufficient interest in each course for it to run, and a few combinations may not be viable.

Key Stage 4-Ready - Curriculum

This section is designed to provide information to students and parents/carers about the current educational climate surrounding the KS4 curriculum and to provide a brief insight for post-education opportunities. As a school, we are aware that the information which is provided to parents/carers can help to guide their son/ward through the KS4 options process.

The Isleworth & Syon Way

Through Year 9, students have been working towards the transition from Key Stage 3 to Key Stage 4. This is another important stepping stone on the journey that students make as they progress through Isleworth & Syon.

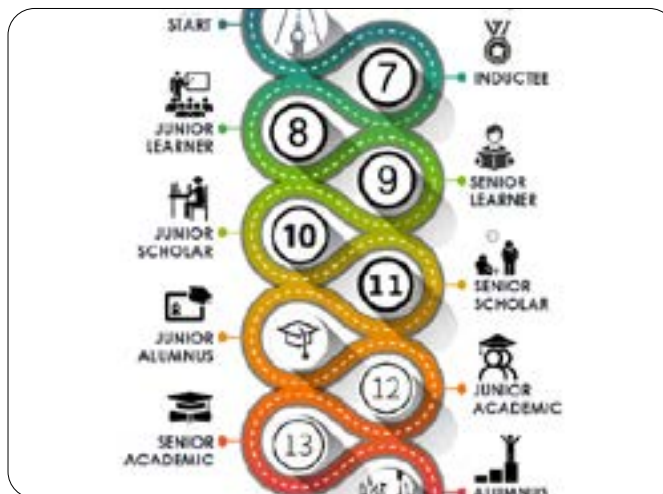
Each stage highlights the academic and personal development of the students as they continue to build on their independence and motivation skills. The transition from Senior Learner in Year 9 to Junior Scholar in Year 10 allows students the opportunity to become more specialised in their chosen academic areas based on the progress made throughout Key Stage 3.

Options Advice

When thinking about courses to choose for KS4, there are several questions which may help with clarifying which subjects to choose.

- What does the student enjoy in school?
- Does the enjoyment reflect itself in academic results?
- Will the options lend themselves to their future career ambitions?
- How does your progress over time compare with recent results in Year 9?

These questions provide a good foundation from which to start to consider your son/ward's GCSE options.



English Baccalaureate (EBacc)

The current English Baccalaureate is not a qualification itself, but a group of GCSE subjects that are usually looked on favourably by universities. The seven qualifications which make up the EBacc are: English language, English literature, mathematics, at least two sciences (which may include computer science), geography or history and a language. A study by the UCL Institute of Education shows that studying subjects included in the EBacc provides students with greater opportunities in further education.

At Isleworth & Syon School, we aim to support our students undertaking all KS4 courses allowing them to choose subjects which best suit their abilities and future career choices. We provide an options process which reflects this.

PSHE

"Education that prepares for life today, and tomorrow."

PSHE education is now part of the statutory school curriculum that helps children and young people stay healthy, safe and prepared for life - and work - in modern Britain. PSHE education also supports academic attainment as it breaks down barriers to learning.

During Year 10, students build on the foundation that set in their Year 9 PSHE curriculum. Students will develop their ideas and understanding on the following topics of PSHE:

- **Employability skills**
- **Financial literacy**
- **Intimate Relationships (Statutory RSE)**
- **Extremism and Radicalisation**
- **Understanding Sexuality**
- **Work Experience**

For this programme of study, students will take part in the Relationship and Sex Education elements of the PSHE curriculum. We will communicate later in the year with more details about these lessons and our policy surrounding them.

There is no formal assessment in PSHE, however students are given the opportunity to reflect on their learning through a baseline knowledge check at the start and end of each unit.



Key Stage 4-Ready - Prepare for the Future



Careers

Careers education, information and guidance (CEIAG) is at the heart of student preparation for the world of work which follows on from school. We aim to help guide students towards appropriate courses for their next steps and inform them about the skills needed within the workplace.

Our mantra is “pathways not corridors” as we look to support your son/ward choose the best option for them. With this in mind, the Year 9 options programme gives an opportunity to start students thinking about their future careers and pathways.

In addition, all students obtain access to online platform UNIFROG. This platform assists students in tracking their transferable skills as well as all the work-related-learning opportunities and experiences which they will undertake. UNIFROG also provides your son/ward with career suggestions for their future. Essentially, the platform brings together all the available careers and employment information into a user-friendly system that helps students to make the best choices for their future.

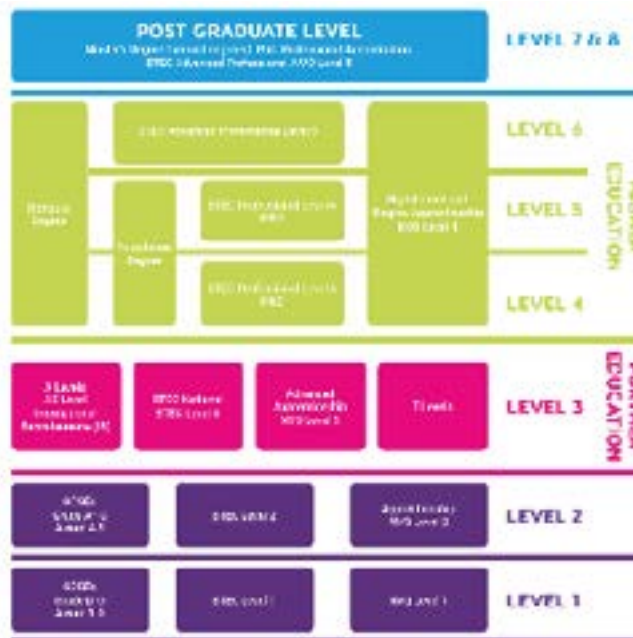
We can also arrange parent/carer access for UNIFROG; if this is of interest, contact the school. Please find more information about Unifrog below, as well the National Careers Service.

Parent/Carer Support

Evidence shows that parents/carers are more influential than teachers when it comes to career decisions - so open a positive discussion with your son/ward about their plans for a career pathway is a must.

Good career guidance is the key to social mobility; it is about showing young people the options open to them, whatever their social and family background. We need to help them make them the right choices to set them on the path to rewarding and future careers.

In addition to using UNIFROG to start this conversation, click the button below to read information from the National Careers Service about supporting young people with career decisions.



Post-16 Advice - the Sixth Form

When students enrol in the school's Sixth Form at the end of Year 11, they specialise in three subjects. Please be aware that choices now will not hinder Sixth Form choices. Students need to have a passion for the subjects they choose and in selecting those subjects, they will become confident and inquisitive learners.

Throughout Key Stage 4, we look to support our students in making the right decisions for them. Students will have a one-to-one interview with an independent Careers Advisor. These meetings will explore each student's individual interests and strengths, and post-16 advice will be given. At the end of these interviews, an action plan will be agreed with the student and emailed to them.

The options discussed at these interviews include completing traditional A level courses, vocational courses, or a mix of A level and vocational qualifications. Although no decisions need to be made about post-KS4 yet, it is helpful to begin discussions about preparing for the future.

In addition, there are some useful links below:

English & Media

GCSE English Language



WHAT WILL I STUDY?

The course covers three areas of reading, writing, and speaking and listening. Students study literary, non-literary, and spoken texts.

- Paper 1 assesses the reading of an unseen fiction text and the quality of students' creative writing.
- Paper 2 assesses the reading of two unseen non-fiction texts and students' ability to write to present a viewpoint.

HOW WILL I BE ASSESSED?

Paper 1: Explorations in Creative Reading and Writing

Written examination - 1 hour 45 minutes (50%)

Paper 2: Writers' Viewpoints and Perspectives

Written examination - 1 hour 45 minutes (50%)

Spoken Language Endorsement

Internally-assessed and externally-moderated

GCSE English Literature



WHAT WILL I STUDY?

The course involves the study of a range of literary texts from different genres and periods. There are two examinations:

- Paper 1 assesses students' understanding of Shakespeare's 'Romeo & Juliet' and 'A Christmas Carol' by Charles Dickens.
- Paper 2 assesses students' understanding of 'Lord of the Flies' by William Golding and an anthology of poems which explore the themes of conflict and power. The examination also assesses how well students can respond to unseen poems.

HOW WILL I BE ASSESSED?

Paper 1: Shakespeare and the 19th-Century Novel

Written examination - 1 hour 45 minutes (40%)

Paper 2: Modern Texts and Poetry

Written examination - 2 hours 15 minutes (60%)

GCSE Media Studies



WHAT WILL I STUDY?

GCSE film studies invites students to analyse and create film, using film theory and history of film as the backdrop to an exciting and vibrant course! There are three areas of study:

- Key Developments in American Film - analysing and comparing Film form and contexts with 'Dracula' (1931) and 'Lost Boys' (1987), whilst also examining critical debates around American Indie film with 'Lady Bird' (2017).
- Global Film - studying the important of representation and narrative structure through one non-UK English Language film 'District 9' (2009), one non-English Language film 'The Wave' (2008) and one contemporary UK film 'Rocks' (2019).
- Film Production - making an extract of own film or writing an original screenplay.



The course involves the study of a wide range of films from around the world, during which students will consider the contexts of production, the key meanings in film, the theory of semiotics and symbolism, the history and development of cinema, and the cultural importance of film worldwide.

HOW WILL I BE ASSESSED?

Unit 1: Key Developments in US Film

Written examination - 1 hour 30 minutes (35%)

Unit 2: Global Film

Written examination - 1 hour 30 minutes (35%)

Unit 3: Film Production

Coursework (30%)

Mathematics

GCSE Mathematics



WHAT WILL I STUDY?

This GCSE course places great emphasis on problem-solving, functionality and mathematical thinking. Some questions will be set in real-world contexts; for instance, decorating a room, designing a garden or perhaps paying an employee. Students must be able to communicate the mathematics they have applied. This may involve giving a reason for an answer, correctly setting out a proof, or accurately marking up a statistical diagram.

HOW WILL I BE ASSESSED?

Assessment is through three written examinations:

Paper 1: Non-Calculator

Written examination - 1 hour 30 minutes (33.3%)

Paper 2: Calculator

Written examination - 1 hour 30 minutes (33.3%)

Paper 3: Calculator

Written examination - 1 hour 30 minutes (33.3%)

All topics studied can be assessed on any of the three papers.



GCSE Statistics



WHAT WILL I STUDY?

The GCSE in statistics takes data handling beyond that covered in the mathematics GCSE, giving students a real understanding of how statistics are applied in the real world. The clear relationship between what we are studying and real-life problems motivates and engages students.

HOW WILL I BE ASSESSED?

Assessment is through two written examination papers with a mixture of short response, medium response and extended response questions. Please note - this will be taken at the end of Year 10.

Paper 1: Calculator

Written examination - 1 hour 30 minutes (50%)

Paper 2: Calculator

Written examination - 1 hour 30 minutes (50%)

Both papers assess all content.



Science

GCSE Science (Combined Trilogy)



WHAT WILL I STUDY?

The course is designed to strengthen and develop all aspects of scientific skills such as:

- gaining scientific knowledge and conceptual understanding through the specific disciplines of biology, chemistry and physics;
- understanding the nature, processes and methods of science, through different types of scientific enquiries that helps to answer scientific questions about the world;
- learning to apply observational, practical, modelling, enquiry and problem-solving skills, both in the laboratory, in the field and in other learning environments;
- developing the ability to evaluate claims based on science through critical analysis of the methodology, evidence and conclusions, both qualitatively and quantitatively; and
- working scientifically and representing science in mathematical and visual model forms.

Biology, chemistry and physics will be taught in ways that help students to develop curiosity about the natural world, insight into how science works, and appreciation of its relevance to their everyday lives. This encourages students to be inspired, motivated and challenged by the subject and its achievements.

Students who display a particular affinity for science may be selected to study triple science: GCSE biology, GCSE chemistry and GCSE physics. Selection for this takes place in January of Year 11, and is informed by the results of mock examinations and performance in practical work.

HOW WILL I BE ASSESSED?

There are six external written examinations to assess subject knowledge as shown below. They will all be sat at the end of Year 11. Practical skills will be assessed internally within lessons, through a series of set required practicals. Triple science has the same number of examinations but each one is 1 hour 45 minutes.

Biology Paper 1 - Cell biology; organisation; infection and response; bioenergetics

Written examination - 1 hour 15 minutes (16.7%)

Chemistry Paper 1 - Atomic structure and the periodic table; bonding, structure, and the properties of matter; quantitative chemistry; chemical changes; energy changes

Written examination - 1 hour 15 minutes (16.7%)

Physics Paper 1 - Energy; electricity; particle model of matter; atomic structure

Written examination - 1 hour 15 minutes (16.7%)

Biology Paper 2 - Homeostasis and response; Inheritance, variation and evolution; ecology

Written examination - 1 hour 15 minutes (16.7%)

Chemistry Paper 2 - The rate and extent of chemical change; organic chemistry; chemical analysis; chemistry of the atmosphere; using resources

Written examination - 1 hour 15 minutes (16.7%)

Physics Paper 2 - Forces; waves; magnetism and electromagnetism

Written examination - 1 hour 15 minutes (16.7%)



Humanities

GCSE Geography

edexcel



WHAT WILL I STUDY?

This course provides students with an opportunity to develop their knowledge and understanding of geographical concepts, and appreciate the relevance of these concepts to our changing world. The course content is split into three units:

- **Physical environments** covers the changing landscapes of the UK; weather, hazards and climate change; and ecosystems, biodiversity and management.
- **Human environments** covers changing cities; global development; and resource management.
- **Geographical investigations** is split into three sections: the physical environment; human environment; and global challenges.

HOW WILL I BE ASSESSED?

Paper 1 - The Physical Environment

Written examination - 1 hour 30 minutes (37.5%)

Paper 2 - The Human Environment

Written examination - 1 hour 30 minutes (37.5%)

Paper 3 - Geographical Investigations: Fieldwork and UK Challenges

Written examination - 1 hour 30 minutes (25%)

GCSE History

edexcel

WHAT WILL I STUDY?

This course includes:

- The development of medicine in Britain from 1250 to the present (Medieval, Renaissance, 18th/19th centuries, and Modern)
- The British sector of the Western Front, 1914-18: injuries, treatment and the trenches
- The origins of the cold war, 1941-1958
- Cold war crisis, 1958-1970
- The end of the cold war 1970-1991
- Queen, government and religion, 1558-69
- Challenges to Elizabeth at home and abroad, 1569-88
- Elizabethan society in the Age of Exploration, 1558-88
- The development of the civil rights movement, 1954-60
- Protest, progress and radicalism, 1960-75
- US involvement in the Vietnam War, 1954-75
- Reactions to, and the end of, US involvement in Vietnam, 1964-75

HOW WILL I BE ASSESSED?

Paper 1 - Medicine in Britain, c1250 - present

Written examination - 1 hour 20 minutes (30%)

Paper 2 - Period Study and British Depth Study

Written examination - 1 hour 50 minutes (40%)

Paper 3 - The USA

Written examination - 1 hour 30 minutes (30%)



GCSE Religious Studies

edexcel

WHAT WILL I STUDY?

Students will explore the relationship between religious beliefs and modern life issues, and study one religion in depth.

For Paper 1 - Study of Religion: students complete an in-depth study of one religion - Christianity, Catholic Christianity or Islam. The topics covered include belief & teachings, practices, sources of wisdom & authority and forms of expression & ways of life.



For Paper 2 - Study of Second Religion: from a choice of seven (Catholic Christianity, Christianity, Islam, Judaism, Hinduism, Buddhism, Sikhism) students study a second religion. This focuses on two areas - belief & teachings and practices.

For Paper 3 - Philosophy & Ethics: Students select one religion from Catholic Christianity, Christianity and Islam. They then consider arguments for the existence of God and religious teachings on relationships & families in the 21st century.

HOW WILL I BE ASSESSED?

Paper 1

Written examination - 1 hour 45 minutes (50%)

Paper 2

Written examination - 50 minutes (25%)

Paper 3

Written examination - 50 minutes (25%)

Modern Foreign Languages

GCSE French



WHAT WILL I STUDY?

You will study French language and culture with a focus on the following topics:

- My personal world
- Lifestyle and wellbeing
- My neighbourhood
- Media and technology
- Studying and my future
- Travel and tourism

All themes and topics will be studied in the context of France and Francophone countries where French is spoken. Students will be taught how to make comparisons to life in the UK and consider the key differences. The lessons are divided equally between the four skill areas of listening, speaking, reading and writing using course textbooks, examination practice papers and authentic texts and recordings from native French speakers. Students will also study independently using online resources such as ActiveLearn, SentenceBuilders and SAM Learning.



GCSE Spanish



WHAT WILL I STUDY?

You will study Spanish language and culture with a focus on the following topics:

- My personal world
- Lifestyle and wellbeing
- My neighbourhood
- Media and technology
- Studying and my future
- Travel and tourism

All themes and topics will be studied in the context of Spain and countries where Spanish is spoken. Students will learn how to make comparisons to life in the UK and consider the key differences. The lessons are divided equally between the four skill areas of listening, speaking, reading and writing using course textbooks, examination practice papers and authentic texts and recordings from native Spanish speakers. Students will also study independently using online resources such as ActiveLearn, SentenceBuilders and SAM Learning.



HOW WILL I BE ASSESSED?

Both courses will be assessed through four examinations, all of which will be sat at the end of Year 11.

Note: (F) means foundation tier; (H) means higher tier.

Listening

Listening examination - 45 minutes (F); 1 hour (H) (25%)

Speaking

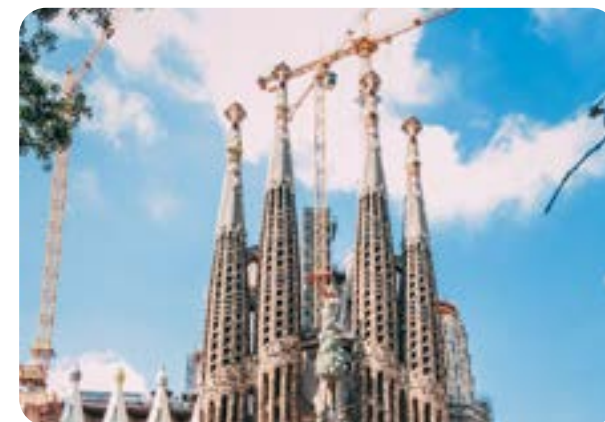
Speaking examination - 7-9 minutes (F); 10-12 minutes (H) (25%)

Reading

Reading examination - 45 minutes (F); 1 hour (H) (25%)

Writing

Written examination - 1 hour 15 minutes (F); 1 hour 20 minutes (H) (25%)



Art & Design

GCSE Art & Design

AQA

WHAT WILL I STUDY?

The art & design GCSE is designed to encourage students to be both adventurous and enquiring, at the same time as being expressive with their work. Students will be given the exciting opportunity to complete two coursework projects using a variety of mediums with photography highly encouraged.

Students will experience a structured approach to the teaching of art & design mediums which focuses on continuity, progression, experience, and high standards. Students will be fully supported throughout the GCSE with continual feedback and support sessions. To be successful, students should not only demonstrate a range of practical ability and skills but also show appreciation of art & design from a diverse range, past and present, relating to their own ideas. This will be achieved through increasing research skills, and recording, developing, and expressing ideas in working journals (sketchbooks) and portfolio sheets, this will lead to final pieces of work. Commitment with independent learning and time management are essential elements in this GCSE, where 60% of marks are gained from coursework.

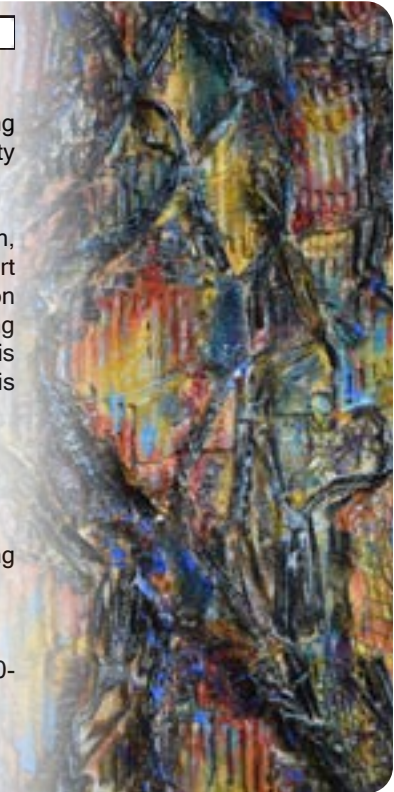
HOW WILL I BE ASSESSED?

Component 1 - Portfolio

Work over the two years of the course responding to the four assessment objectives supported with two mock exams producing final pieces of work supporting studies for book work (60%).

Component 2 - Examination/externally set task

Preparatory work supporting a chosen theme selected from an externally set task paper over 8 school weeks followed by a 10-hour period (exam) to produce a final piece of work supporting the preparatory work to a set subject title (40%).



Business & Economics



GCSE Business

WHAT WILL I STUDY?

The course is divided into two themes. Students who prefer to be assessed by external written examinations would be well-suited to this course.

Theme 1: Investigating Small Business

Theme 1 concentrates on the key business concepts, issues and skills involved in starting and running a small business. It provides a framework for students to explore core concepts through the lens of an entrepreneur setting up a business. In this theme, students will be introduced to local and national business contexts and will develop an understanding of how these contexts impact business behaviour and decisions. Local contexts refer specifically to small businesses or those operating in a single UK location and national contexts relate to businesses operating in more than one location or across the UK.

Theme 2: Building a Business

Theme 2 examines how a business develops beyond the start-up phase. It focuses on the key business concepts, issues and decisions used to grow a business, with emphasis on aspects of marketing, operations, finance and human resources. Theme 2 also considers the impact of the wider world on the decisions a business makes as it grows. In this theme, students will be introduced to national and global business contexts and will develop an understanding of how these contexts impact business behaviour and decisions. National contexts build on those in Theme 1 and relate to businesses operating in more than one location or across the UK. Global contexts relate to non-UK or transnational businesses.

HOW WILL I BE ASSESSED?

Theme 1

Written examination - 1 hour 30 minutes (50%)

Theme 2

Written examination - 1 hour 30 minutes (50%)



GCSE Economics

WHAT WILL I STUDY?

The course is divided into two units. Students who prefer to be assessed by external written examinations would be well-suited to this course.

Component 1 - Introduction to Economics

This component introduces learners to the fundamental economic terms and concepts. Learners will apply these to investigate and explain how markets work in contemporary and historical economic contexts. They will study the different roles and perspectives of the main economic agents (consumers, producers and the government) and how they interact in the economy. Learners will develop the ability to use and interpret quantitative data to justify economic decisions. They will learn to appreciate that all economic choices have costs and benefits. This will encourage them to consider moral, ethical and sustainability issues that arise as a result of the impact of economic activity in a range of national and global contexts.

Component 2 - National and International Economics

This component provides learners with an understanding of the main economic objectives and role of the government in achieving them. Learners will investigate the effects of economic policies on markets. They will use and interpret quantitative evidence, such as unemployment figures, in contemporary and historical economic contexts. They will learn to appreciate the importance and impact of international trade by analysing data such as quantitative information on exports and imports. Learners are encouraged to consider moral, ethical and sustainability issues that arise as a result of the impact of economic activity in a range of national and global contexts.

HOW WILL I BE ASSESSED?

Paper 1 - Introduction to Economics

Written examination - 1 hour 30 minutes (50%)

Paper 2 - National and International Economics

Written examination - 1 hour 30 minutes (50%)

Please note that the provisional requirement level for this course is a projected level 6c or above in mathematics.

Computing & ICT



Cambridge National In IT

OCR

WHAT WILL I STUDY?

This course has been designed for students who want to acquire technical knowledge and technical skills through vocational contexts by applying the learned knowledge and processes related in practical, real-life situations. This qualification builds on the knowledge of the Information Technology strand in the KS3 curriculum. Students will:

- use different applications and tools to design, create and evaluate IT solutions and products
- create a data manipulation solution.
- create an Augmented Reality prototype.

HOW WILL I BE ASSESSED?

R050: IT in the digital world

Practical examination (40%)

R060: Data manipulation using spreadsheets

Internal assessment (30%)

R070: Using augmented reality to present information

Internal assessment (30%)

```
# Prevent database transaction if the database is locked
abort("The Rails environment is running in production mode!")
require 'spec_helper'
require 'rspec/rails'
```

GCSE Computer Science

AQA

WHAT WILL I STUDY?

This course consists of three units, and gives students a real, in-depth understanding of how computer technology works. It offers an insight into what goes on 'behind-the-scenes', including computer programming. They will:

- develop their understanding of current and emerging technologies and how they work;
- look at the use of algorithms in computer programs;
- become independent and discerning users of IT;
- acquire and apply creative and technical skills, knowledge and understanding of IT in a range of contexts;
- develop computer programs to solve problems; and
- evaluate the effectiveness of computer programs, solutions and the impact of computer technology in society.

HOW WILL I BE ASSESSED?

Paper 1 - Computational Thinking and Problem Solving

Written examination - 2 hours (50%)

This covers areas such computational thinking, problem solving, code tracing and applied computing, as well as theoretical knowledge of computer science.

Paper 2 - Written assessment

Written examination - 1 hour 45 minutes (50%)

This covers: fundamentals of data representation, computer networks and cyber-security; computer systems; and ethical, legal and environmental impacts of digital technology on wider society, including issues of privacy.

Design & Technology

GCSE Engineering



WHAT WILL I STUDY?

This GCSE introduces students to a host of new technologies, helping them to gain practical skills and understanding to inspire a lifelong interest in engineering. It will particularly appeal to those who enjoy being creative with materials and systems, with an affinity for drawing, design, making, mathematics and problem-solving. Pupils will study the following engineering areas:

- Engineering materials
- Engineering manufacturing processes
- Systems (electronic, mechanic, pneumatic)
- Testing and investigation
- The impact of modern technologies
- Practical engineering skills

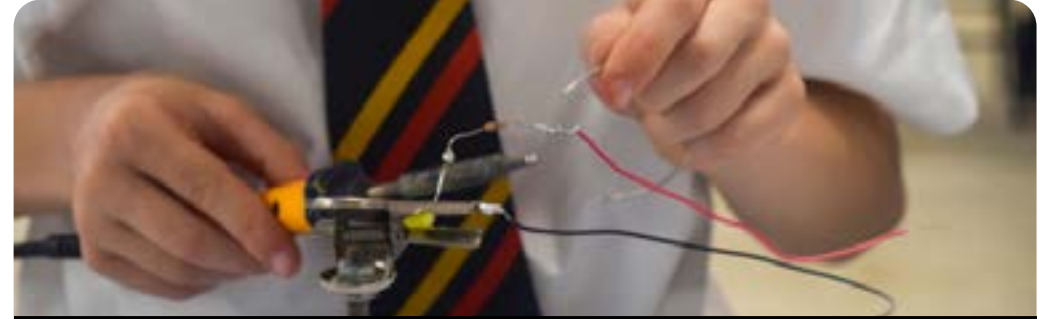
HOW WILL I BE ASSESSED?

Question paper

Written examination - 2 hours (60%)

Practical engineering

Non-examination assessment (40%)



Vocational Award in Engineering



WHAT WILL I STUDY?

This course focuses on applied learning - acquiring and applying knowledge, skills and understanding through purposeful tasks set in sector or subject contexts that have many of the characteristics of real work. The applied purpose provides the opportunity for authentic work-related learning, but more than this, it will require learners to consider how the use and application of their learning impacts on individuals, employers, society and the environment. The applied purpose will also enable learners to learn in such a way that they develop:

- skills required for independent learning and development;
- a range of generic and transferable skills;
- the ability to solve problems;
- the skills of project-based research, development and presentation;
- the fundamental ability to work alongside other professionals, in a professional environment;
- the ability to apply learning in vocational contexts.

Students will study the following areas:

- Engineering design
- Producing engineering products
- Solving engineering problems

HOW WILL I BE ASSESSED?

Question paper

Written examination - 1 hour 30 minutes (40%)

Practical engineering

Non-examination assessment (40%)

Performing Arts



GCSE Drama

eduqas

WHAT WILL I STUDY?

Over the course of two years, you will develop the skills to rehearse and perform in scripted and devised drama. You will perform in two final assessed pieces and have the opportunity to study one significant play text in detail. Additionally, you will learn to evaluate and analyse live performance through regular theatre visits. Your knowledge and understanding will be assessed through coursework, live performance and written examination.

HOW WILL I BE ASSESSED?

Component 1 - Devising Theatre

Assessed through a preparatory portfolio, performance and timed evaluation of an original piece of drama from a set stimulus (40%).

Component 2 - Performing from a Text

Assessed through a performance of two extracts from a significant play text (20%).

Component 3 - Interpreting Theatre

Written examination - 1 hour 30 minutes (40%)

Questions cover a set text of landmark drama, such as 'An Inspector Calls' by J.B. Priestley and an evaluation of a piece of live theatre.



GCSE Music

edexcel

WHAT WILL I STUDY?

Students will explore four areas of study - Instrumental Music 1700-1820; Vocal Music; Music for Stage and Screen; and Fusions. These will all be experienced through a variety of listening, analysis, performing and composing activities. Each area will contain two set works. The course will explore musical elements, musical contexts and musical language through these specific pieces of music. All three components (performance, composition and listening) are an important part of the whole course; the lessons throughout will reflect the balance of these and build on the strengths that students bring to the subject.

Music students will also develop their wider music-making skills using a range of industry-standard music software programmes including Logic Pro X and Sibelius, as well as participating in music industry development experiences both in school and across London.

HOW WILL I BE ASSESSED?

Performance (internally-assessed)

One solo performance and one ensemble performance (30%)

Composition (internally-assessed)

Two compositions, one to a brief and one free composition (30%)

Listening and Contextual Understanding

Written examination - 1 hour 45 minutes (40%)

Physical Education



Cambridge National Sports Studies

OCR

WHAT WILL I STUDY?

The Cambridge National Level 1/Level 2 Sports Studies is a vocational qualification with an emphasis on applied learning. This means that students will learn key information and then have to apply it to day-to-day situations. It is crucial that students considering this option have an interest in both learning about and playing sport.

HOW WILL I BE ASSESSED?

R184 - Contemporary Issues in Sport

External examination - 1 hour 15 minutes (40%)

R185 - Performance and Leadership in Sports Activities

Internal assessment - produce a sport and coaching portfolio to a set assignment (40%)

R186 - Sport and the Media

Internal assessment - produce a portfolio on sport and the media (20%)

GCSE Physical Education

AQA

WHAT WILL I STUDY?

The GCSE physical education course includes both practical and theoretical elements. The practical element requires students to be assessed in three sporting areas as a performer. It is vital that students selecting this course have an interest in sport and are currently playing/participating in at least two sports competitively. The theory element includes one piece of coursework and two examinations. The coursework focuses on performance analysis and training. The examination includes a range of sports-related content such as: anatomy and physiology, sociology, training methods and diet.

Students considering this option MUST be playing sport regularly in and out of school.

HOW WILL I BE ASSESSED?

Practical assessment

Internal assessment (40%)

Paper 1 - The Human Body and Movement in Physical Activity in Sport

Written examination - 1 hour 15 minutes (30%)

Paper 2 - Socio-Cultural Influences and Well-Being in Physical Activity and Sport

Written examination - 1 hour 15 minutes (30%)



What Next?

Online Form

All applications for Key Stage 4 courses must be completed using the online form (see image right). The form will be available to access from **Monday 17 March**. On this day, the form will be emailed directly to the student.

The deadline for submitting the online form is **Monday 24 March**.

Drop-In Sessions

Mr McAlinden will hold a drop-in session for parents/carers so they can ask any questions that they may have. These are by appointment only (email school@isleworthsyon.org) on **Tuesday 18 March** (9.00 - 9.30am) and **Thursday 20 March** (9.00 - 9.30am).

Confirmation of Choices

In the Summer Term, we will email parents/carers with confirmation of their child's choices.



ISLEWORTH & SYON SCHOOL
FINIS CORONAT OPUS

Response Form - KS4 Options 2020-21

This form will register your name. Make sure you check your choices before you press 'submit', as you can only fill it out once.

* Required

1. Option 1:

- French
- Geography
- History
- Spanish

2. Option 2: *

Select your answer

3. Option 3: *

Select your answer

4. Reserve 1: *

Please note that these are RESERVE options, in case your preferred courses (indicated in Options 1-3) are unavailable. They must not be the same as your choices in the previous boxes.

Select your answer

5. Reserve 2: *

Please note that these are RESERVE options, in case your preferred courses (indicated in Options 1-3) are unavailable. They must not be the same as your choices in the previous boxes.

Select your answer

6. Reserve 3: *

Please note that these are RESERVE options, in case your preferred courses (indicated in Options 1-3) are unavailable. They must not be the same as your choices in the previous boxes.

Select your answer

Submit




Isleworth & Syon School

Ridgeway Road, Isleworth

Middlesex, TW7 5LJ

Tel: 020 8568 5791

Email: school@isleworthsyon.org

 www.isleworthsyon.org

  /IsleworthSyon